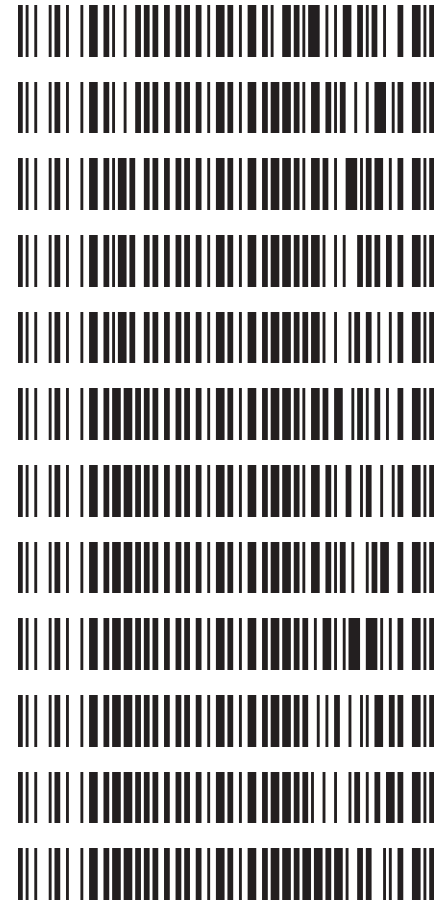


Worklist: 3483

| <u>LAB_CASE</u> | <u>ITEM</u> | <u>TASK_ID</u> | <u>DESCRIPTION</u> |
|-----------------|-------------|----------------|------------------------|
| C2019-0898 | 3 | 154939 | AM 3 Urine Carboxy-THC |
| C2019-0962 | 2 | 154940 | AM 3 Urine Carboxy-THC |
| M2019-2306 | 5 | 154941 | AM 3 Urine Carboxy-THC |
| M2019-2708 | 3 | 154942 | AM 3 Urine Carboxy-THC |
| M2019-2712 | 3 | 154943 | AM 3 Urine Carboxy-THC |
| P2019-1582 | 1 | 154944 | AM 3 Urine Carboxy-THC |
| P2019-1588 | 1 | 154945 | AM 3 Urine Carboxy-THC |
| P2019-1593 | 3 | 154946 | AM 3 Urine Carboxy-THC |
| P2019-1634 | 1 | 154947 | AM 3 Urine Carboxy-THC |
| P2019-1676 | 1 | 154948 | AM 3 Urine Carboxy-THC |
| P2019-1723 | 1 | 154949 | AM 3 Urine Carboxy-THC |
| P2019-1807 | 1 | 154950 | AM 3 Urine Carboxy-THC |



AM 3: Carboxy-THC Urine Extraction

Extraction Date: 06/19/2019
Negative Urine Lot: POC031319
Positive Control Working Solution Lot: WS012319
1N KOH Lot: 091817
Ethyl Acetate Lot: BDH 121615D
Potassium Phosphate Buffer Lot: 020118

Analyst: Celena Shrum
GC/MS ID: Major Mass Spec
BioRad C3 Control Lot: 68460
Hexane Lot: BDH 121015A
BSTFA + 1% TMCS Lot: Cerilliant FN08231301

Pre-Analytic:

- 1. *Positive Control Working Solution Preparation Instructions:*
 Add 180uL of 100ug/mL 11-nor-9-carboxy- Δ 9-THC Stock Solution to 9.82mL Methanol. Other volumes may be prepared. Solution is stable for 1-year or the expiration of the stock reference material (whichever is sooner). Store under refrigeration.
- 2. Verify Tune and Tune evaluation completed within the previous 7 days. Tune and Tune evaluation reports initialed and filed.
- 3. Create GCMS sequence to include controls, case blanks and case samples.

Analytic:

- 1. Remove working solutions, external control, negative urine and case samples from cold storage.
- 2. To each labeled round bottomed tube add 3mL sample, using negative urine sample for both negative and positive control. Positive control: spike negative urine with 100uL positive control working solution.
- 3. Add 500uL 1N KOH to all tubes. Check pH. (If pH <12, add additional 500ul 1N KOH). (Note: put a mark on the tube or separate the tubes that have a pH <12 as you will need to know this in step 5).
- 4. Place tubes in 40C water bath for ~15 min. Remove and allow to cool.
- 5. If original pH was >12, add 1.5mL pH 1.8 Saturated Phosphate Buffer and 3mL Hexane/Ethyl Acetate (87:13)
 If original pH was <12, add 3mL pH 1.8 Saturated Phosphate Buffer and 4mL Hexane/Ethyl Acetate (87:13)
- 6. Rock at ambient temp for ~ 10 minutes.
- 7. Centrifuge for ~ 10 min at ~3500rpm.
- 8. Transfer solvent to tapered bottom tube and evaporate to dryness under nitrogen @ 37C.
- 9. Add 50uL Ethyl Acetate and 50uL silylating reagent, cap and vortex. Heat @ 95C for 15min, then allow to cool.
- 10. Transfer sample to labeled ALS vial with insert.
- 11. Place ALS Vials in appropriate location on GCMS rack and run using appropriate GCMS method.

Post-Analytic

- 1. Complete Data analysis on all samples and corresponding sample blanks
 GCMS Data path: D:\DATA\CDS\2019\am 3 worklist 3483
- 2. Did positive and negative control samples provide intended response? Y / N
- 3. **Criteria for ID:** RT +/1 0.1 min., Ion Ratio of 347:473 & 371:488 within +/- 20%.
 Sample response greater than Min Corrected Area, Diluted samples
- 4. Central File Packet to include: LIMS Worklist, Method Checklist, and Control sample GCMS data printouts

Comments:

Data Path : G:\TOX\Pocatello\MMS\CDS\2019\am 3 worklist 3483\
 Data File : MJ THC-PC1.D
 Acq On : 19 Jun 2019 14:04
 Operator : ISP\datastor
 Sample : Spiked Positive c-THC Control
 Misc : c-THC lot # 0497429 in Negative Lot # POC031319; Worklist 3483
 ALS Vial : 40 Sample Multiplier: 1

Integration Parameters: events.e
 Integrator: ChemStation

Method : C:\gcms\1\methods\TOX.M
 Title :

Signal : EIC Ion 371.00 (370.70 to 371.70): MJ THC-PC1.D\data.ms

| peak # | R.T. min | first scan | max scan | last scan | PK TY | peak height | corr. area | corr. % max. | % of total |
|--------|----------|------------|----------|-----------|-------|-------------|------------|--------------|------------|
| 1 | 5.117 | 9 | 11 | 17 | PV 3 | 46 | 354 | 0.09% | 0.041% |
| 2 | 5.143 | 17 | 20 | 22 | VV 2 | 53 | 328 | 0.08% | 0.038% |
| 3 | 5.167 | 22 | 29 | 34 | VV | 145 | 1947 | 0.48% | 0.228% |
| 4 | 5.198 | 34 | 39 | 64 | VV | 202 | 4333 | 1.07% | 0.508% |
| 5 | 5.276 | 64 | 66 | 69 | PV | 36 | 280 | 0.07% | 0.033% |
| 6 | 5.310 | 69 | 78 | 80 | VV | 167 | 2160 | 0.54% | 0.253% |
| 7 | 5.320 | 80 | 82 | 90 | VV | 167 | 1271 | 0.32% | 0.149% |
| 8 | 5.388 | 90 | 105 | 114 | PV | 2781 | 39392 | 9.76% | 4.614% |
| 9 | 5.425 | 114 | 118 | 134 | VV | 641 | 11663 | 2.89% | 1.366% |
| 10 | 5.513 | 142 | 149 | 153 | VV 2 | 136 | 1868 | 0.46% | 0.219% |
| 11 | 5.548 | 153 | 161 | 171 | VV | 138 | 2681 | 0.66% | 0.314% |
| 12 | 5.603 | 171 | 180 | 191 | PV | 129 | 2888 | 0.72% | 0.338% |
| 13 | 5.639 | 191 | 192 | 205 | VV | 70 | 1037 | 0.26% | 0.121% |
| 14 | 5.696 | 205 | 213 | 216 | PV | 106 | 1070 | 0.27% | 0.125% |
| 15 | 5.726 | 216 | 223 | 224 | VV 2 | 127 | 1515 | 0.38% | 0.177% |
| 16 | 5.737 | 224 | 227 | 238 | VV | 138 | 1919 | 0.48% | 0.225% |
| 17 | 5.799 | 238 | 248 | 271 | VV 2 | 168 | 5258 | 1.30% | 0.616% |
| 18 | 5.901 | 271 | 284 | 286 | PV | 142 | 1664 | 0.41% | 0.195% |
| 19 | 5.912 | 286 | 288 | 293 | VV 2 | 113 | 1071 | 0.27% | 0.125% |
| 20 | 5.958 | 293 | 303 | 317 | VV | 276 | 6498 | 1.61% | 0.761% |
| 21 | 6.005 | 317 | 320 | 321 | VV | 148 | 944 | 0.23% | 0.111% |
| 22 | 6.016 | 321 | 324 | 327 | VV | 205 | 1748 | 0.43% | 0.205% |
| 23 | 6.033 | 327 | 330 | 331 | VV | 216 | 1616 | 0.40% | 0.189% |
| 24 | 6.048 | 331 | 335 | 346 | VV 2 | 223 | 4617 | 1.14% | 0.541% |
| 25 | 6.095 | 346 | 351 | 353 | VV 2 | 179 | 2009 | 0.50% | 0.235% |
| 26 | 6.157 | 353 | 373 | 374 | VV | 903 | 18075 | 4.48% | 2.117% |
| 27 | 6.213 | 374 | 392 | 409 | VV | 22215 | 403584 | 100.00% | 47.268% |
| 28 | 6.270 | 409 | 412 | 438 | VV | 769 | 25067 | 6.21% | 2.936% |
| 29 | 6.421 | 443 | 464 | 480 | VV | 777 | 29079 | 7.21% | 3.406% |
| 30 | 6.491 | 480 | 488 | 490 | VV | 425 | 6296 | 1.56% | 0.737% |
| 31 | 6.500 | 490 | 492 | 494 | VV | 409 | 2445 | 0.61% | 0.286% |
| 32 | 6.535 | 494 | 504 | 513 | VV | 637 | 16340 | 4.05% | 1.914% |
| 33 | 6.599 | 513 | 526 | 547 | VV | 1265 | 39584 | 9.81% | 4.636% |
| 34 | 6.709 | 552 | 564 | 573 | VV 2 | 314 | 10207 | 2.53% | 1.195% |
| 35 | 6.787 | 573 | 591 | 606 | VV | 1297 | 43120 | 10.68% | 5.050% |
| 36 | 6.858 | 606 | 616 | 627 | VV 2 | 608 | 19774 | 4.90% | 2.316% |
| 37 | 6.916 | 627 | 636 | 648 | VV | 756 | 21086 | 5.22% | 2.470% |
| 38 | 6.980 | 648 | 658 | 669 | VV 2 | 1191 | 30709 | 7.61% | 3.597% |
| 39 | 7.041 | 669 | 680 | 695 | VV | 1811 | 46604 | 11.55% | 5.458% |
| 40 | 7.101 | 695 | 700 | 720 | VV | 441 | 11378 | 2.82% | 1.333% |
| 41 | 7.203 | 720 | 736 | 741 | PV | 603 | 12037 | 2.98% | 1.410% |
| 42 | 7.238 | 741 | 748 | 770 | VV | 764 | 18315 | 4.54% | 2.145% |

Sum of corrected areas: 853827
 Signal : EIC Ion 473.00 (472.70 to 473.70): MJ THC-PC1.D\data.ms

| peak # | R.T. min | first scan | max scan | last scan | PK TY | peak height | corr. area | corr. % max. | % of total |
|--------|----------|------------|----------|-----------|-------|-------------|------------|--------------|------------|
| 1 | 5.125 | 7 | 14 | 24 | BB 3 | 50 | 607 | 0.42% | 0.327% |
| 2 | 5.508 | 106 | 147 | 148 | BV | 21 | 56 | 0.04% | 0.030% |
| 3 | 5.517 | 148 | 150 | 160 | VV 3 | 25 | 250 | 0.17% | 0.135% |
| 4 | 6.214 | 376 | 392 | 426 | BV | 8391 | 144703 | 100.00% | 77.930% |
| 5 | 6.956 | 631 | 650 | 674 | VV 2 | 1865 | 38601 | 26.68% | 20.789% |
| 6 | 7.227 | 719 | 744 | 761 | PV | 61 | 1465 | 1.01% | 0.789% |

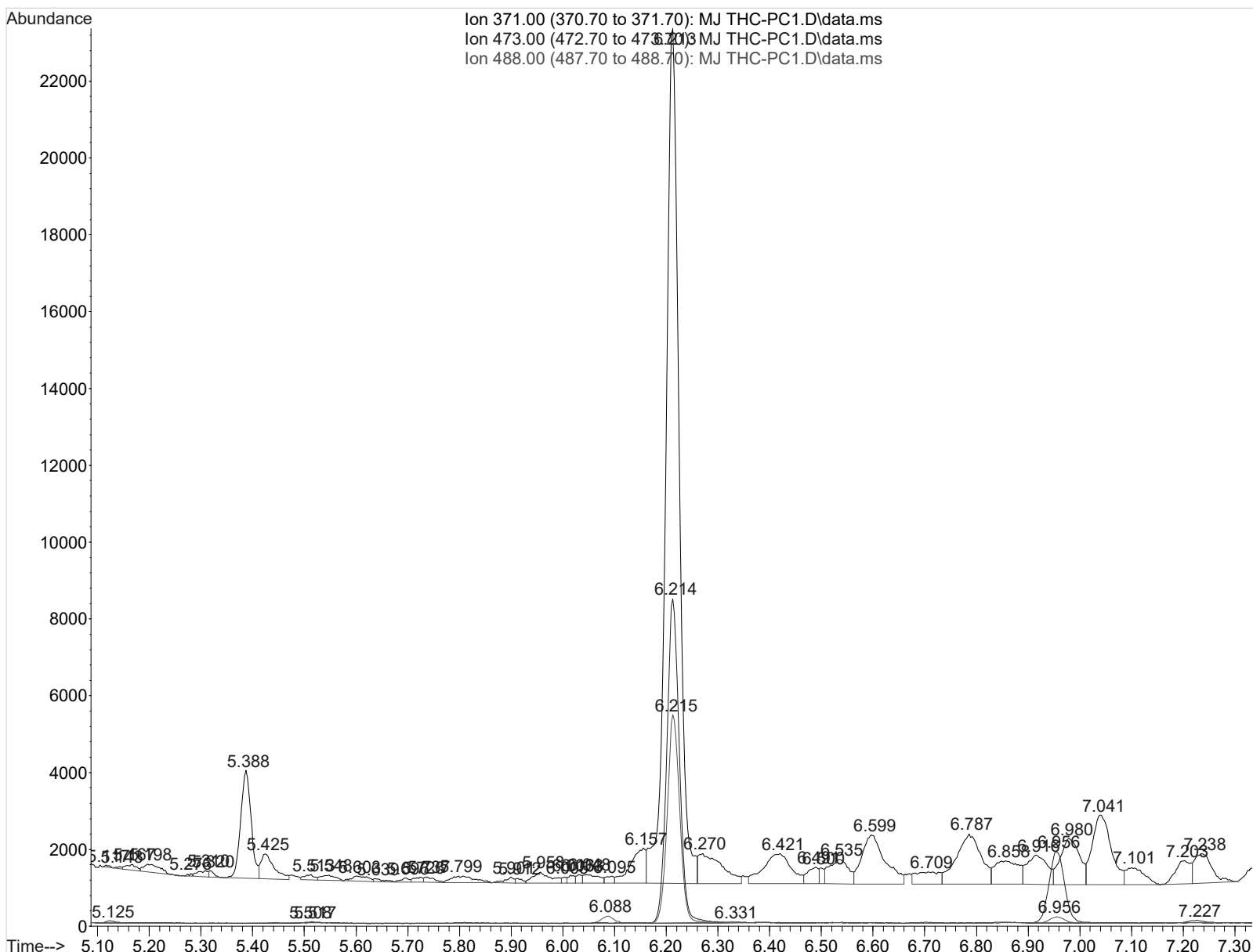
Sum of corrected areas: 185683

Signal : EIC Ion 488.00 (487.70 to 488.70): MJ THC-PC1.D\data.ms

| peak # | R.T. min | first scan | max scan | last scan | PK TY | peak height | corr. area | corr. % max. | % of total |
|--------|----------|------------|----------|-----------|-------|-------------|------------|--------------|------------|
| 1 | 6.088 | 329 | 349 | 374 | BB 2 | 183 | 3273 | 3.52% | 3.274% |
| 2 | 6.215 | 374 | 393 | 423 | BV | 5389 | 92858 | 100.00% | 92.901% |
| 3 | 6.331 | 423 | 433 | 448 | VB 3 | 29 | 682 | 0.73% | 0.682% |
| 4 | 6.956 | 629 | 650 | 665 | BV 2 | 159 | 3142 | 3.38% | 3.143% |

Sum of corrected areas: 99954

TOX.M Mon Jun 24 09:13:09 2019



Data Path : G:\TOX\Pocatello\MMS\CDS\2019\am 3 worklist 3483\
 Data File : MJ THC-PC2.D
 Acq On : 20 Jun 2019 14:43
 Operator : ISP\datastor
 Sample : Spiked Positive c-THC Control
 Misc : c-THC lot # 0497429 in Negative Lot # POC031319; Worklist 3483
 ALS Vial : 40 Sample Multiplier: 1

Integration Parameters: events.e
 Integrator: ChemStation

Method : C:\gcms\1\methods\TOX.M
 Title :

Signal : EIC Ion 371.00 (370.70 to 371.70): MJ THC-PC2.D\data.ms

| peak # | R.T. min | first scan | max scan | last scan | PK TY | peak height | corr. area | corr. % max. | % of total |
|--------|----------|------------|----------|-----------|-------|-------------|------------|--------------|------------|
| 1 | 5.136 | 16 | 18 | 22 | PV | 53 | 282 | 0.05% | 0.026% |
| 2 | 5.168 | 22 | 29 | 32 | VV | 188 | 1875 | 0.34% | 0.173% |
| 3 | 5.180 | 32 | 33 | 36 | VV 2 | 183 | 1170 | 0.21% | 0.108% |
| 4 | 5.203 | 36 | 41 | 60 | VV | 329 | 8125 | 1.46% | 0.750% |
| 5 | 5.276 | 60 | 67 | 69 | PV 2 | 91 | 889 | 0.16% | 0.082% |
| 6 | 5.315 | 69 | 80 | 90 | VV | 265 | 5651 | 1.01% | 0.521% |
| 7 | 5.358 | 90 | 95 | 99 | PV | 76 | 539 | 0.10% | 0.050% |
| 8 | 5.389 | 99 | 106 | 110 | VV | 177 | 2263 | 0.41% | 0.209% |
| 9 | 5.430 | 110 | 120 | 134 | VV | 897 | 15780 | 2.83% | 1.456% |
| 10 | 5.477 | 134 | 136 | 145 | VV 2 | 155 | 2312 | 0.41% | 0.213% |
| 11 | 5.516 | 145 | 150 | 155 | VV 3 | 169 | 2385 | 0.43% | 0.220% |
| 12 | 5.563 | 155 | 166 | 175 | VV | 378 | 7619 | 1.37% | 0.703% |
| 13 | 5.607 | 175 | 182 | 185 | VV | 191 | 2325 | 0.42% | 0.214% |
| 14 | 5.625 | 185 | 188 | 196 | VV | 163 | 1996 | 0.36% | 0.184% |
| 15 | 5.669 | 200 | 203 | 212 | PV 3 | 38 | 260 | 0.05% | 0.024% |
| 16 | 5.705 | 212 | 216 | 221 | VV 2 | 92 | 1076 | 0.19% | 0.099% |
| 17 | 5.736 | 221 | 227 | 239 | VV | 128 | 2283 | 0.41% | 0.211% |
| 18 | 5.795 | 239 | 247 | 249 | PV | 139 | 1232 | 0.22% | 0.114% |
| 19 | 5.820 | 249 | 256 | 267 | VV | 305 | 5684 | 1.02% | 0.524% |
| 20 | 5.888 | 271 | 279 | 289 | VV | 205 | 4609 | 0.83% | 0.425% |
| 21 | 5.921 | 289 | 291 | 294 | VV 2 | 106 | 643 | 0.12% | 0.059% |
| 22 | 5.960 | 294 | 304 | 313 | VV | 288 | 5787 | 1.04% | 0.534% |
| 23 | 6.002 | 313 | 319 | 320 | VV 3 | 167 | 1741 | 0.31% | 0.161% |
| 24 | 6.013 | 320 | 323 | 325 | VV | 175 | 1387 | 0.25% | 0.128% |
| 25 | 6.031 | 325 | 329 | 330 | VV | 220 | 1801 | 0.32% | 0.166% |
| 26 | 6.040 | 330 | 332 | 337 | VV | 221 | 2594 | 0.47% | 0.239% |
| 27 | 6.062 | 337 | 340 | 348 | VV 2 | 235 | 3296 | 0.59% | 0.304% |
| 28 | 6.095 | 348 | 351 | 356 | VV 2 | 198 | 2593 | 0.47% | 0.239% |
| 29 | 6.162 | 356 | 375 | 377 | VV | 1115 | 23244 | 4.17% | 2.144% |
| 30 | 6.218 | 377 | 394 | 409 | VV | 30211 | 557266 | 100.00% | 51.410% |
| 31 | 6.271 | 409 | 412 | 415 | VV | 872 | 8417 | 1.51% | 0.776% |
| 32 | 6.284 | 415 | 417 | 422 | VV | 868 | 9877 | 1.77% | 0.911% |
| 33 | 6.303 | 422 | 423 | 444 | VV 2 | 744 | 16428 | 2.95% | 1.516% |
| 34 | 6.429 | 444 | 467 | 480 | VV | 926 | 35069 | 6.29% | 3.235% |
| 35 | 6.498 | 480 | 491 | 496 | VV | 526 | 11191 | 2.01% | 1.032% |
| 36 | 6.543 | 496 | 507 | 515 | VV | 751 | 20214 | 3.63% | 1.865% |
| 37 | 6.603 | 515 | 528 | 553 | VV | 1554 | 49644 | 8.91% | 4.580% |
| 38 | 6.687 | 553 | 557 | 560 | VV | 284 | 3408 | 0.61% | 0.314% |
| 39 | 6.714 | 560 | 566 | 568 | VV 3 | 319 | 3731 | 0.67% | 0.344% |
| 40 | 6.724 | 568 | 570 | 571 | VV | 327 | 1801 | 0.32% | 0.166% |
| 41 | 6.795 | 571 | 594 | 609 | VV | 1575 | 55744 | 10.00% | 5.143% |
| 42 | 6.858 | 609 | 616 | 628 | VV | 753 | 21442 | 3.85% | 1.978% |
| 43 | 6.899 | 628 | 630 | 632 | VV | 637 | 4354 | 0.78% | 0.402% |
| 44 | 6.928 | 632 | 641 | 650 | VV | 906 | 23717 | 4.26% | 2.188% |
| 45 | 6.990 | 650 | 662 | 672 | VV 2 | 1458 | 38137 | 6.84% | 3.518% |

g

| | | | | | | | | | |
|----|-------|-----|-----|-----|----|------|-------|--------|--------|
| 46 | 7.051 | 672 | 683 | 698 | VV | 2239 | 58687 | 10.53% | 5.414% |
| 47 | 7.113 | 698 | 705 | 722 | VV | 556 | 14822 | 2.66% | 1.367% |
| 48 | 7.208 | 722 | 738 | 740 | PV | 754 | 10798 | 1.94% | 0.996% |
| 49 | 7.247 | 740 | 751 | 764 | VV | 942 | 26586 | 4.77% | 2.453% |
| 50 | 7.288 | 764 | 766 | 773 | VV | 125 | 1189 | 0.21% | 0.110% |

Sum of corrected areas: 1083962

Signal : EIC Ion 473.00 (472.70 to 473.70): MJ THC-PC2.D\data.ms

| peak # | R.T. min | first scan | max scan | last scan | PK TY | peak height | corr. area | corr. % max. | % of total |
|--------|----------|------------|----------|-----------|-------|-------------|------------|--------------|------------|
| 1 | 5.128 | 3 | 15 | 30 | BV | 122 | 1604 | 0.79% | 0.581% |
| 2 | 5.515 | 129 | 150 | 164 | BB 3 | 40 | 662 | 0.33% | 0.240% |
| 3 | 5.811 | 237 | 253 | 263 | PV | 25 | 483 | 0.24% | 0.175% |
| 4 | 6.219 | 375 | 394 | 425 | PV | 11519 | 203395 | 100.00% | 73.699% |
| 5 | 6.313 | 425 | 427 | 430 | VV | 37 | 242 | 0.12% | 0.088% |
| 6 | 6.330 | 430 | 433 | 444 | VB 2 | 26 | 421 | 0.21% | 0.152% |
| 7 | 6.395 | 444 | 455 | 466 | BV | 31 | 444 | 0.22% | 0.161% |
| 8 | 6.711 | 547 | 565 | 574 | PB 3 | 29 | 458 | 0.23% | 0.166% |
| 9 | 6.853 | 595 | 615 | 632 | BB 2 | 29 | 536 | 0.26% | 0.194% |
| 10 | 6.960 | 632 | 652 | 682 | BV | 3289 | 67733 | 33.30% | 24.543% |

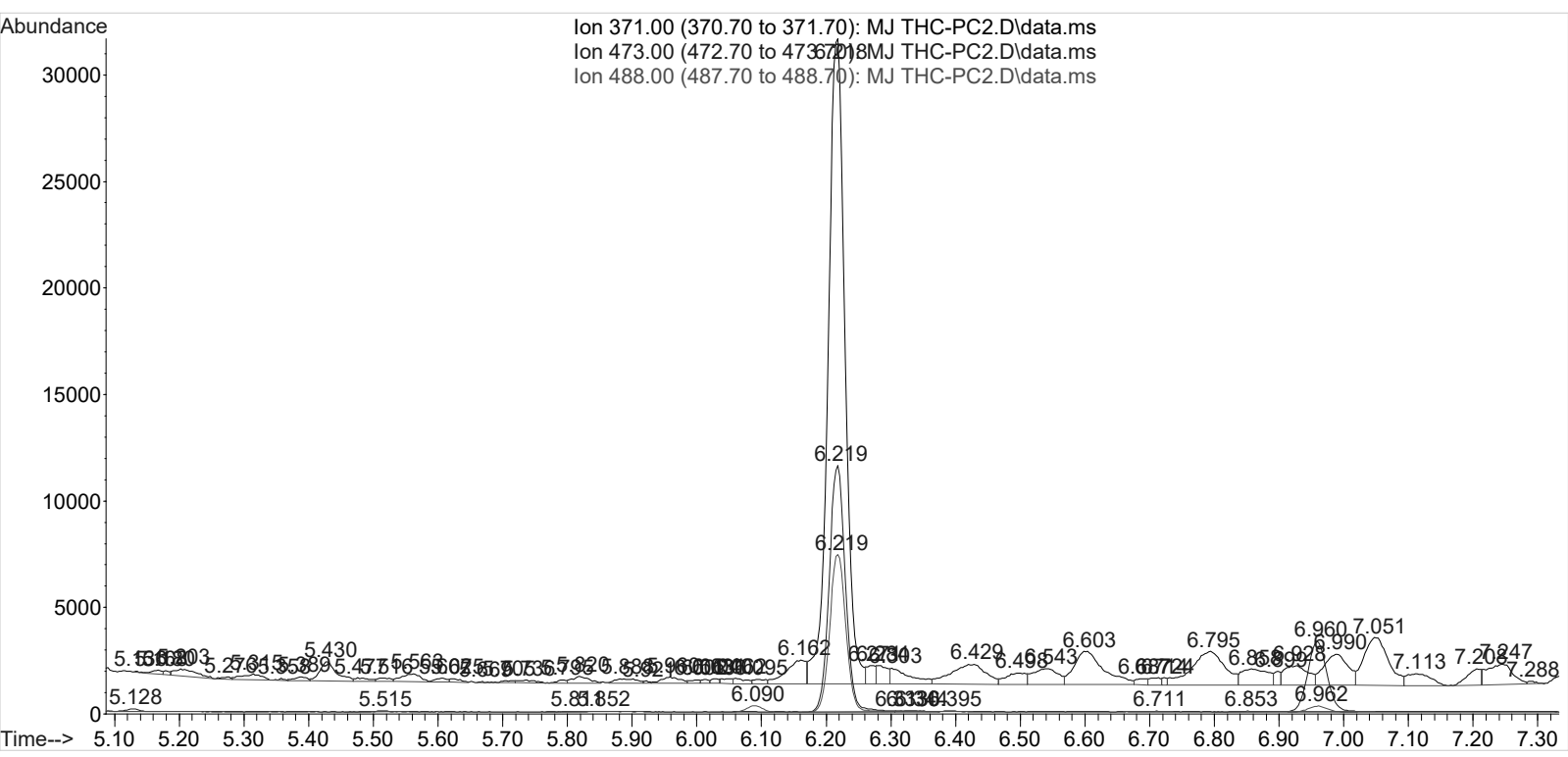
Sum of corrected areas: 275979

Signal : EIC Ion 488.00 (487.70 to 488.70): MJ THC-PC2.D\data.ms

| peak # | R.T. min | first scan | max scan | last scan | PK TY | peak height | corr. area | corr. % max. | % of total |
|--------|----------|------------|----------|-----------|-------|-------------|------------|--------------|------------|
| 1 | 5.852 | 263 | 267 | 271 | PV 2 | 12 | 74 | 0.06% | 0.052% |
| 2 | 6.090 | 325 | 349 | 363 | PV | 293 | 4830 | 3.71% | 3.398% |
| 3 | 6.219 | 363 | 394 | 424 | PV | 7363 | 130118 | 100.00% | 91.537% |
| 4 | 6.344 | 424 | 438 | 449 | VV 2 | 52 | 1295 | 1.00% | 0.911% |
| 5 | 6.962 | 635 | 652 | 673 | BV 2 | 285 | 5831 | 4.48% | 4.102% |

Sum of corrected areas: 142148

TOX.M Mon Jun 24 09:15:30 2019



Data Path : G:\TOX\Pocatello\MMS\CDS\2019\am 3 worklist 3483\
 Data File : MJ THC-NC.D
 Acq On : 19 Jun 2019 13:53
 Operator : ISP\datastor
 Sample : Negative Control
 Misc : Lot # POC031319; AM #3 Worklist 3483
 ALS Vial : 39 Sample Multiplier: 1

Integration Parameters: events.e
 Integrator: ChemStation

Method : C:\gcms\1\methods\TOX.M
 Title :

Signal : EIC Ion 371.00 (370.70 to 371.70): MJ THC-NC.D\data.ms

| peak # | R.T. min | first scan | max scan | last scan | PK TY | peak height | corr. area | corr. % max. | % of total |
|--------|----------|------------|----------|-----------|-------|-------------|------------|--------------|------------|
| 1 | 5.200 | 33 | 40 | 57 | VV | 129 | 2981 | 9.96% | 1.039% |
| 2 | 5.280 | 66 | 68 | 70 | VV | 37 | 192 | 0.64% | 0.067% |
| 3 | 5.313 | 73 | 79 | 87 | VV | 104 | 1597 | 5.34% | 0.556% |
| 4 | 5.387 | 91 | 105 | 113 | PV | 1323 | 18912 | 63.20% | 6.591% |
| 5 | 5.424 | 113 | 118 | 133 | VV 2 | 352 | 5951 | 19.89% | 2.074% |
| 6 | 5.547 | 154 | 161 | 163 | VV | 59 | 600 | 2.01% | 0.209% |
| 7 | 5.557 | 163 | 164 | 174 | VV | 52 | 455 | 1.52% | 0.159% |
| 8 | 5.614 | 174 | 184 | 194 | PV | 81 | 1729 | 5.78% | 0.602% |
| 9 | 5.709 | 207 | 217 | 220 | PV | 56 | 945 | 3.16% | 0.329% |
| 10 | 5.726 | 220 | 223 | 236 | VV | 74 | 1405 | 4.69% | 0.490% |
| 11 | 5.806 | 236 | 251 | 261 | PV 2 | 79 | 2199 | 7.35% | 0.767% |
| 12 | 5.842 | 261 | 263 | 268 | VV 2 | 44 | 334 | 1.12% | 0.116% |
| 13 | 5.905 | 268 | 285 | 289 | VV | 76 | 1508 | 5.04% | 0.526% |
| 14 | 5.924 | 289 | 292 | 293 | VV | 54 | 310 | 1.04% | 0.108% |
| 15 | 5.951 | 293 | 301 | 312 | VV | 159 | 3607 | 12.05% | 1.257% |
| 16 | 5.987 | 312 | 313 | 316 | VV | 80 | 507 | 1.70% | 0.177% |
| 17 | 6.022 | 316 | 326 | 329 | VV | 142 | 2316 | 7.74% | 0.807% |
| 18 | 6.035 | 329 | 330 | 332 | VV | 139 | 711 | 2.38% | 0.248% |
| 19 | 6.049 | 332 | 335 | 344 | VV | 141 | 2288 | 7.65% | 0.797% |
| 20 | 6.089 | 344 | 349 | 351 | VV 2 | 115 | 1176 | 3.93% | 0.410% |
| 21 | 6.100 | 351 | 353 | 357 | VV | 119 | 1099 | 3.67% | 0.383% |
| 22 | 6.153 | 357 | 371 | 373 | VV | 563 | 9775 | 32.66% | 3.407% |
| 23 | 6.164 | 373 | 375 | 391 | VV | 568 | 13155 | 43.96% | 4.585% |
| 24 | 6.224 | 391 | 396 | 401 | VV | 244 | 4002 | 13.37% | 1.395% |
| 25 | 6.275 | 401 | 413 | 436 | VV | 374 | 15645 | 52.28% | 5.453% |
| 26 | 6.414 | 442 | 462 | 478 | VV | 477 | 17256 | 57.66% | 6.014% |
| 27 | 6.493 | 478 | 489 | 494 | VV | 261 | 6042 | 20.19% | 2.106% |
| 28 | 6.534 | 494 | 504 | 513 | VV | 386 | 9686 | 32.37% | 3.376% |
| 29 | 6.594 | 513 | 524 | 549 | VV | 837 | 25408 | 84.91% | 8.855% |
| 30 | 6.672 | 549 | 551 | 554 | VV 2 | 138 | 1102 | 3.68% | 0.384% |
| 31 | 6.698 | 554 | 561 | 563 | VV | 178 | 2379 | 7.95% | 0.829% |
| 32 | 6.710 | 563 | 565 | 572 | VV 2 | 179 | 2559 | 8.55% | 0.892% |
| 33 | 6.786 | 572 | 591 | 606 | VV | 815 | 27484 | 91.84% | 9.579% |
| 34 | 6.863 | 606 | 618 | 624 | VV | 385 | 10851 | 36.26% | 3.782% |
| 35 | 6.914 | 624 | 636 | 648 | VV | 483 | 15191 | 50.76% | 5.294% |
| 36 | 6.979 | 648 | 658 | 669 | VV 2 | 786 | 20041 | 66.97% | 6.985% |
| 37 | 7.041 | 669 | 679 | 695 | VV | 1173 | 29924 | 100.00% | 10.429% |
| 38 | 7.103 | 695 | 701 | 720 | VV | 285 | 7190 | 24.03% | 2.506% |
| 39 | 7.208 | 720 | 738 | 740 | PV | 354 | 7753 | 25.91% | 2.702% |
| 40 | 7.233 | 740 | 746 | 766 | VV | 477 | 10656 | 35.61% | 3.714% |

Sum of corrected areas: 286922

Signal : EIC Ion 473.00 (472.70 to 473.70): MJ THC-NC.D\data.ms

| peak | R.T. | first | max | last | PK | peak | corr. | corr. | % of |
|------|------|-------|-----|------|----|------|-------|-------|------|
|------|------|-------|-----|------|----|------|-------|-------|------|

CS

| # | min | scan | scan | scan | TY | height | area | % max. | total |
|---|-------|------|------|------|------|--------|-------|---------|---------|
| 1 | 5.128 | 6 | 15 | 28 | BB 2 | 28 | 371 | 2.31% | 2.186% |
| 2 | 5.439 | 114 | 123 | 135 | BV 2 | 39 | 526 | 3.28% | 3.102% |
| 3 | 6.956 | 625 | 650 | 685 | BB 2 | 782 | 16071 | 100.00% | 94.711% |

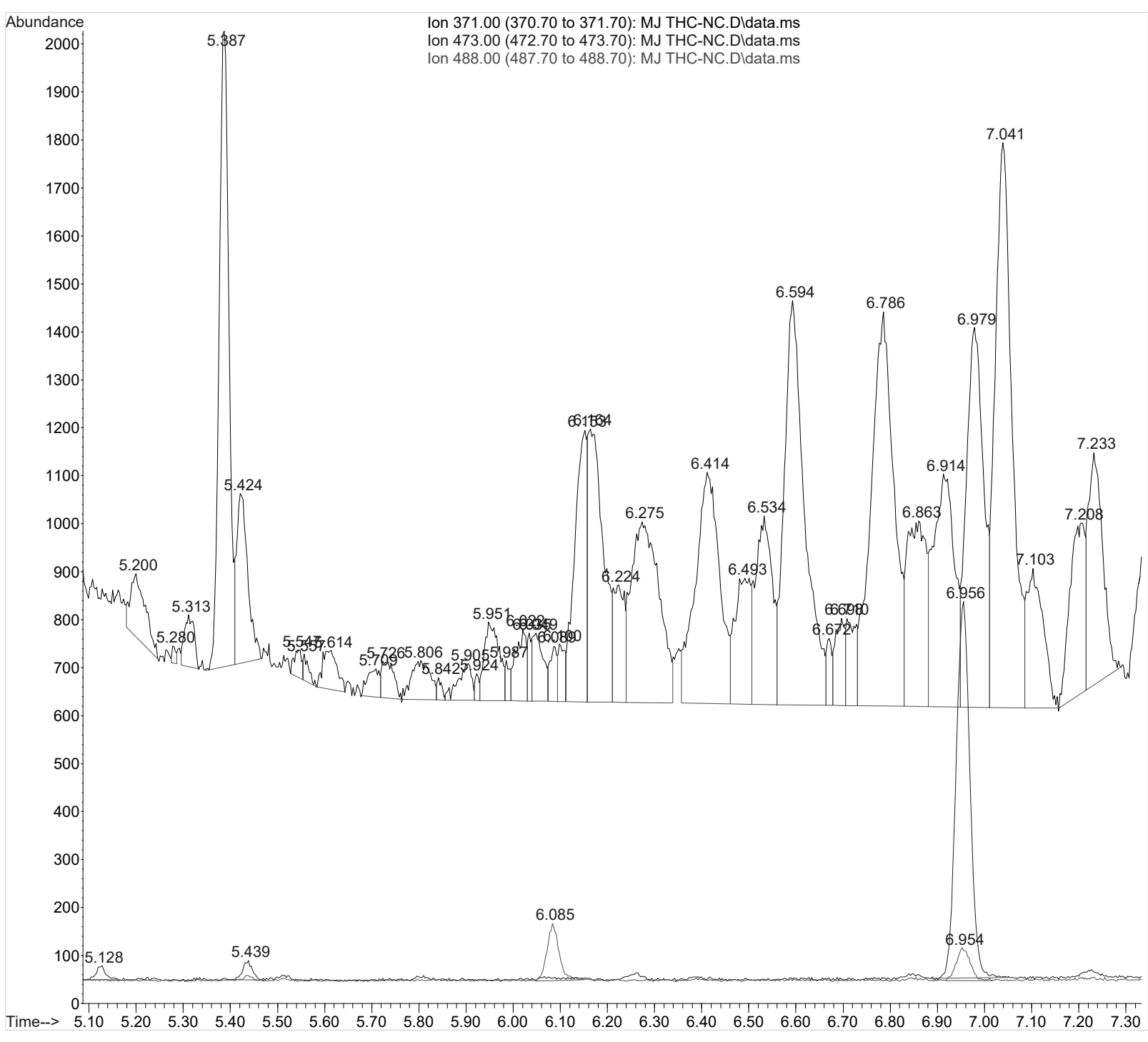
Sum of corrected areas: 16968

Signal : EIC Ion 488.00 (487.70 to 488.70): MJ THC-NC.D\data.ms

| peak # | R.T. min | first scan | max scan | last scan | PK TY | peak height | corr. area | corr. % max. | % of total |
|--------|----------|------------|----------|-----------|-------|-------------|------------|--------------|------------|
| 1 | 6.085 | 334 | 348 | 370 | BB | 116 | 2038 | 100.00% | 59.608% |
| 2 | 6.954 | 637 | 649 | 671 | BV 2 | 67 | 1381 | 67.76% | 40.392% |

Sum of corrected areas: 3419

TOX.M Mon Jun 24 09:16:26 2019



Data Path : G:\TOX\Pocatello\MMS\CDS\2019\am 3 worklist 3483\
 Data File : MJ THC-C3.D
 Acq On : 19 Jun 2019 14:26
 Operator : ISP\datastor
 Sample : Biorad C3 Control
 Misc : C3 Lot # 68460; Worklist 3483
 ALS Vial : 41 Sample Multiplier: 1

Integration Parameters: events.e
 Integrator: ChemStation

Method : C:\gcms\1\methods\TOX.M
 Title :

Signal : EIC Ion 371.00 (370.70 to 371.70): MJ THC-C3.D\data.ms

| peak # | R.T. min | first scan | max scan | last scan | PK TY | peak height | corr. area | corr. % max. | % of total |
|--------|----------|------------|----------|-----------|-------|-------------|------------|--------------|------------|
| 1 | 5.141 | 16 | 20 | 22 | PV | 99 | 732 | 0.31% | 0.096% |
| 2 | 5.164 | 22 | 28 | 36 | VV | 263 | 4127 | 1.76% | 0.540% |
| 3 | 5.201 | 36 | 41 | 61 | VV | 336 | 6620 | 2.83% | 0.865% |
| 4 | 5.274 | 61 | 66 | 67 | PV | 90 | 598 | 0.26% | 0.078% |
| 5 | 5.294 | 67 | 73 | 77 | VV 2 | 178 | 2519 | 1.08% | 0.329% |
| 6 | 5.313 | 77 | 80 | 90 | VV | 189 | 2421 | 1.03% | 0.317% |
| 7 | 5.349 | 90 | 92 | 94 | PV | 33 | 153 | 0.07% | 0.020% |
| 8 | 5.388 | 94 | 105 | 113 | VV | 4220 | 60367 | 25.77% | 7.892% |
| 9 | 5.425 | 113 | 118 | 141 | VV | 1066 | 19989 | 8.53% | 2.613% |
| 10 | 5.504 | 141 | 146 | 148 | VV | 99 | 969 | 0.41% | 0.127% |
| 11 | 5.520 | 148 | 151 | 153 | VV 2 | 123 | 785 | 0.34% | 0.103% |
| 12 | 5.529 | 153 | 155 | 157 | VV 2 | 137 | 833 | 0.36% | 0.109% |
| 13 | 5.552 | 157 | 162 | 177 | VV | 155 | 2883 | 1.23% | 0.377% |
| 14 | 5.606 | 177 | 181 | 203 | VV | 130 | 3301 | 1.41% | 0.432% |
| 15 | 5.682 | 203 | 208 | 210 | PV 2 | 40 | 299 | 0.13% | 0.039% |
| 16 | 5.708 | 210 | 217 | 224 | VV | 104 | 1912 | 0.82% | 0.250% |
| 17 | 5.736 | 224 | 226 | 238 | VV 2 | 100 | 1570 | 0.67% | 0.205% |
| 18 | 5.795 | 238 | 247 | 257 | VV | 167 | 3416 | 1.46% | 0.447% |
| 19 | 5.842 | 257 | 263 | 273 | VV | 134 | 2493 | 1.06% | 0.326% |
| 20 | 5.898 | 273 | 283 | 288 | VV | 138 | 2441 | 1.04% | 0.319% |
| 21 | 5.917 | 288 | 289 | 293 | VV 2 | 115 | 817 | 0.35% | 0.107% |
| 22 | 5.956 | 293 | 303 | 314 | VV | 275 | 6199 | 2.65% | 0.810% |
| 23 | 5.993 | 314 | 316 | 317 | VV 2 | 131 | 766 | 0.33% | 0.100% |
| 24 | 6.018 | 317 | 324 | 332 | VV 3 | 202 | 4606 | 1.97% | 0.602% |
| 25 | 6.049 | 332 | 335 | 345 | VV | 231 | 3774 | 1.61% | 0.493% |
| 26 | 6.084 | 345 | 347 | 349 | VV 2 | 141 | 759 | 0.32% | 0.099% |
| 27 | 6.095 | 349 | 351 | 356 | VV 2 | 169 | 1803 | 0.77% | 0.236% |
| 28 | 6.156 | 356 | 372 | 374 | VV | 995 | 17465 | 7.46% | 2.283% |
| 29 | 6.214 | 374 | 392 | 407 | VV | 11950 | 234228 | 100.00% | 30.623% |
| 30 | 6.274 | 407 | 413 | 436 | VV | 713 | 25571 | 10.92% | 3.343% |
| 31 | 6.416 | 436 | 462 | 477 | VV | 816 | 31643 | 13.51% | 4.137% |
| 32 | 6.495 | 477 | 490 | 492 | VV | 450 | 9187 | 3.92% | 1.201% |
| 33 | 6.538 | 492 | 505 | 514 | VV 2 | 817 | 22983 | 9.81% | 3.005% |
| 34 | 6.595 | 514 | 525 | 549 | VV | 1465 | 44827 | 19.14% | 5.861% |
| 35 | 6.695 | 553 | 560 | 561 | VV | 317 | 4026 | 1.72% | 0.526% |
| 36 | 6.705 | 561 | 563 | 567 | VV 3 | 292 | 2651 | 1.13% | 0.347% |
| 37 | 6.784 | 567 | 591 | 607 | VV | 1477 | 52499 | 22.41% | 6.864% |
| 38 | 6.854 | 607 | 615 | 627 | VV 2 | 692 | 21218 | 9.06% | 2.774% |
| 39 | 6.915 | 627 | 636 | 648 | VV | 852 | 23500 | 10.03% | 3.072% |
| 40 | 6.985 | 648 | 660 | 669 | VV | 1303 | 33983 | 14.51% | 4.443% |
| 41 | 7.046 | 669 | 681 | 696 | VV | 2035 | 53843 | 22.99% | 7.039% |
| 42 | 7.101 | 696 | 700 | 719 | VV | 511 | 13551 | 5.79% | 1.772% |
| 43 | 7.204 | 719 | 736 | 738 | PV | 683 | 11086 | 4.73% | 1.449% |
| 44 | 7.240 | 738 | 749 | 771 | VV 2 | 886 | 25465 | 10.87% | 3.329% |

9

Sum of corrected areas: 764881

Signal : EIC Ion 473.00 (472.70 to 473.70): MJ THC-C3.D\data.ms

| peak # | R.T. min | first scan | max scan | last scan | PK TY | peak height | corr. area | corr. % max. | % of total |
|--------|----------|------------|----------|-----------|-------|-------------|------------|--------------|------------|
| 1 | 5.440 | 113 | 123 | 138 | VV | 94 | 1369 | 1.75% | 1.469% |
| 2 | 5.512 | 138 | 148 | 160 | PV 3 | 25 | 513 | 0.66% | 0.551% |
| 3 | 6.215 | 376 | 393 | 434 | VV | 4446 | 78073 | 100.00% | 83.788% |
| 4 | 6.548 | 493 | 509 | 525 | BV 2 | 133 | 2608 | 3.34% | 2.799% |
| 5 | 6.707 | 543 | 564 | 580 | PB 2 | 37 | 978 | 1.25% | 1.050% |
| 6 | 6.847 | 592 | 612 | 635 | BV | 32 | 734 | 0.94% | 0.787% |
| 7 | 6.958 | 635 | 651 | 673 | PV 2 | 174 | 3733 | 4.78% | 4.007% |
| 8 | 7.222 | 689 | 743 | 767 | BV 2 | 191 | 5170 | 6.62% | 5.549% |

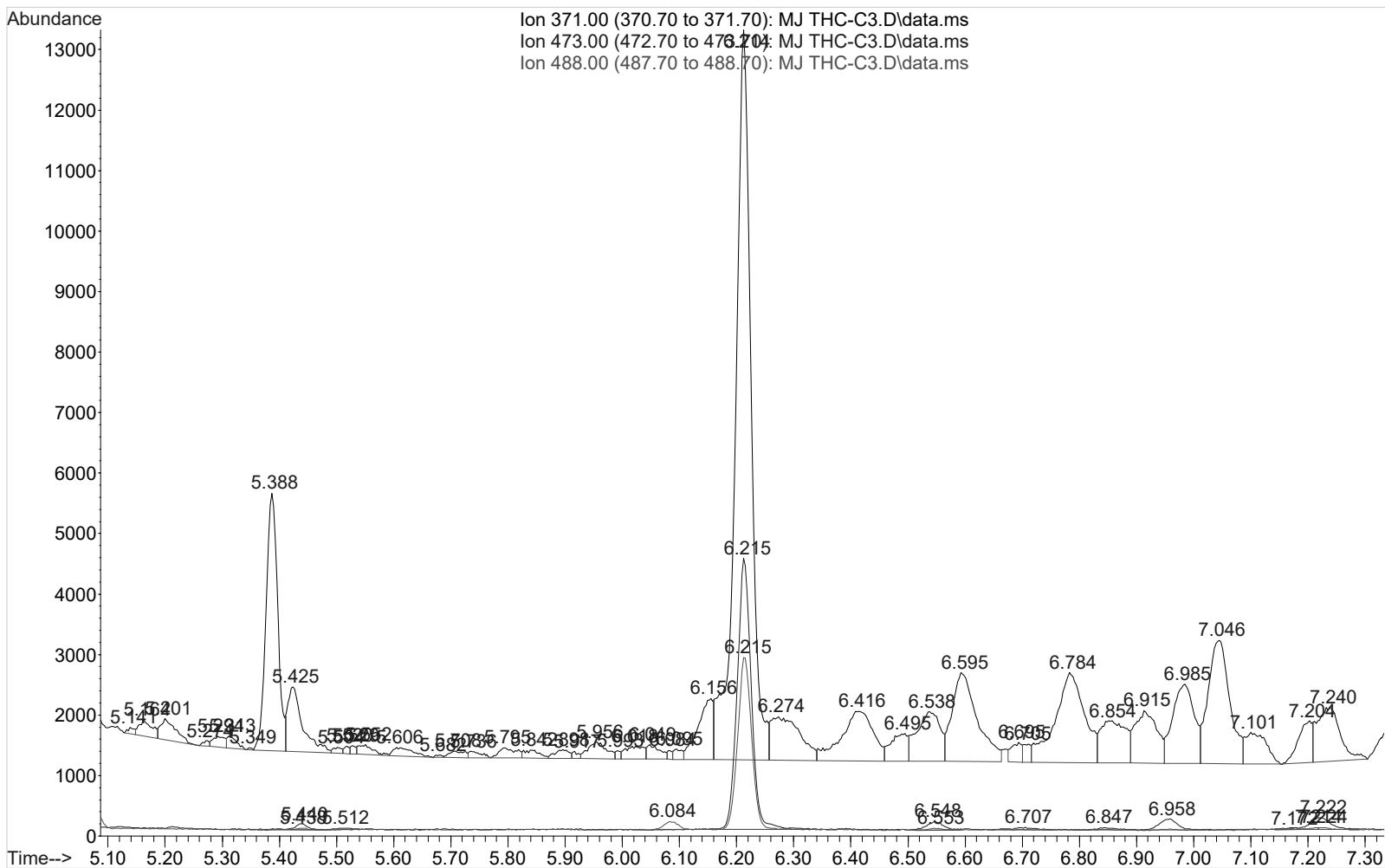
Sum of corrected areas: 93179

Signal : EIC Ion 488.00 (487.70 to 488.70): MJ THC-C3.D\data.ms

| peak # | R.T. min | first scan | max scan | last scan | PK TY | peak height | corr. area | corr. % max. | % of total |
|--------|----------|------------|----------|-----------|-------|-------------|------------|--------------|------------|
| 1 | 5.438 | 96 | 123 | 135 | BV | 29 | 480 | 0.98% | 0.901% |
| 2 | 6.084 | 336 | 347 | 364 | BV | 135 | 2349 | 4.80% | 4.406% |
| 3 | 6.215 | 372 | 393 | 416 | BV | 2846 | 48934 | 100.00% | 91.773% |
| 4 | 6.553 | 497 | 510 | 524 | BV 2 | 31 | 530 | 1.08% | 0.993% |
| 5 | 7.172 | 715 | 725 | 733 | PV | 18 | 298 | 0.61% | 0.559% |
| 6 | 7.214 | 733 | 740 | 741 | VV | 34 | 292 | 0.60% | 0.547% |
| 7 | 7.224 | 741 | 743 | 758 | VB 2 | 34 | 438 | 0.89% | 0.821% |

Sum of corrected areas: 53321

TOX.M Mon Jun 24 09:17:00 2019



| | |
|-----------|-----------|
| Run Date: | 6/19/2019 |
|-----------|-----------|

| | |
|-------------|------|
| Worklist #: | 3483 |
|-------------|------|

| | |
|--------------------|---------------------|
| Laboratory Case #: | BioRad C3 Lot 68460 |
|--------------------|---------------------|

| |
|---------------------------|
| Case Calculations: |
|---------------------------|

| | |
|-------------------------|--------|
| EIC Ion 371 Corr. Area: | 234228 |
|-------------------------|--------|

| | |
|-------------------------|-------|
| EIC Ion 473 Corr. Area: | 78073 |
|-------------------------|-------|

| | |
|----------------|--------------|
| 473:371 Ratio: | 0.333 |
|----------------|--------------|

| | |
|----------------|--------------|
| 488:371 Ratio: | 0.209 |
|----------------|--------------|

| | |
|-------------------------|-------|
| EIC Ion 488 Corr. Area: | 48934 |
|-------------------------|-------|

| |
|--------------------------------------|
| Quality Control Calculations: |
|--------------------------------------|

| | 1st Control | 2nd Control |
|-------------------------|-------------|----------------|
| EIC Ion 371 Corr. Area: | 403584 | 557266 |
| EIC Ion 473 Corr. Area: | 144703 | 203395 |
| EIC Ion 488 Corr. Area: | 92858 | 130118 |
| Ratio of 473:371: | 0.359 | 0.365 |
| | | Average: 0.362 |
| Ratio of 488:371: | 0.230 | 0.233 |
| | | Average: 0.232 |

| | | | |
|----------------------------------|-------|----|-------|
| Acceptable Retention Time Range: | 6.118 | to | 6.313 |
|----------------------------------|-------|----|-------|

| | |
|--|-------|
| Approximate Minimum Corrected Area of 371 Ion: | 80717 |
|--|-------|

| | | | |
|---------------------------------|-------|----|-------|
| Acceptable 473:371 Ratio Range: | 0.289 | to | 0.434 |
|---------------------------------|-------|----|-------|

| | | | |
|---------------------------------|-------|----|-------|
| Acceptable 488:371 Ratio Range: | 0.185 | to | 0.278 |
|---------------------------------|-------|----|-------|